

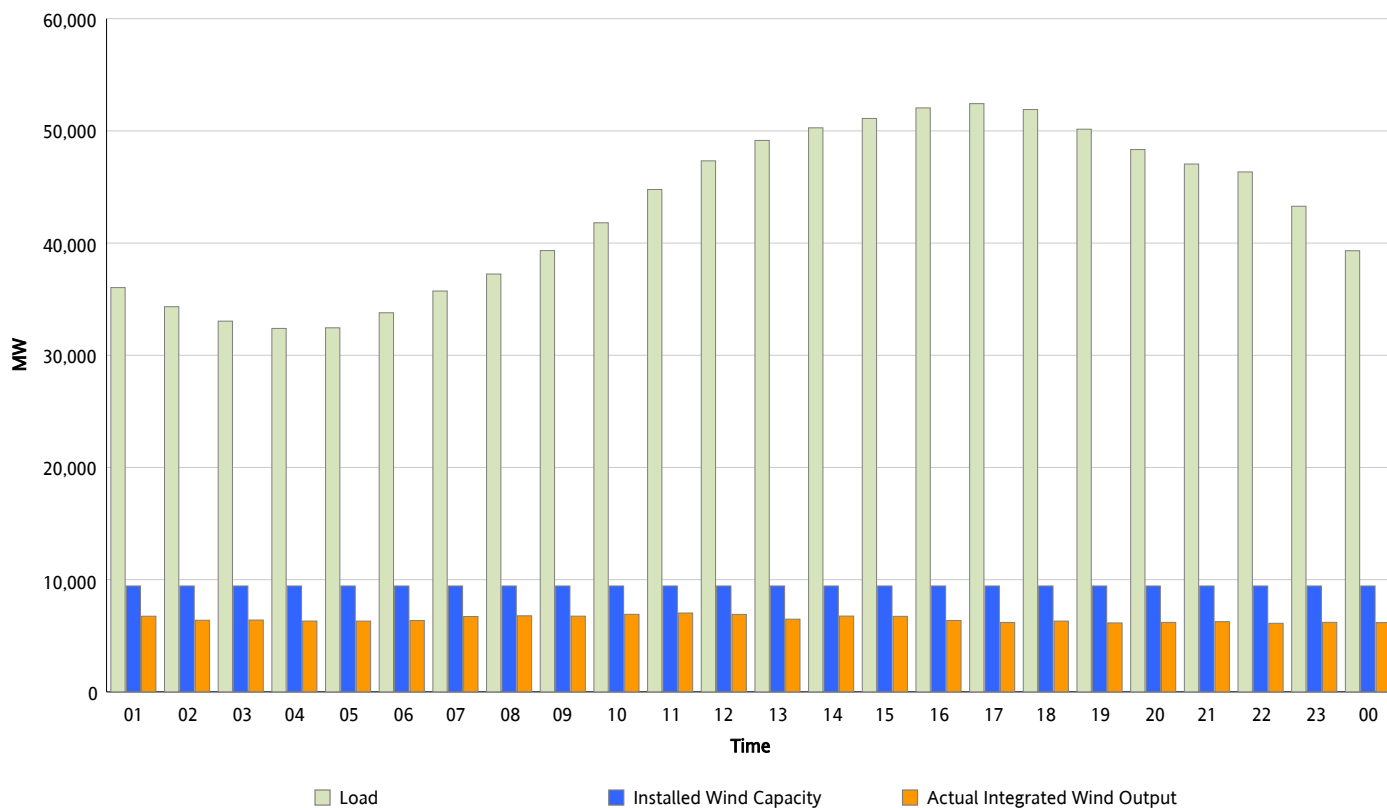


ERCOT Grid Operations

Wind Integration Report : 06/20/2012

| | |
|----------------------|-----------|
| Peak Load | 52,429 MW |
| Load Peak Hour (HE) | 17 |
| Wind Over Peak | 6,189 MW |
| Wind Record 06/19/12 | 8,368 MW |
| Max Wind Value* | 7,209 MW |
| Wind Peak Time | 10:50 |
| Wind Integration % | 15.75 % |

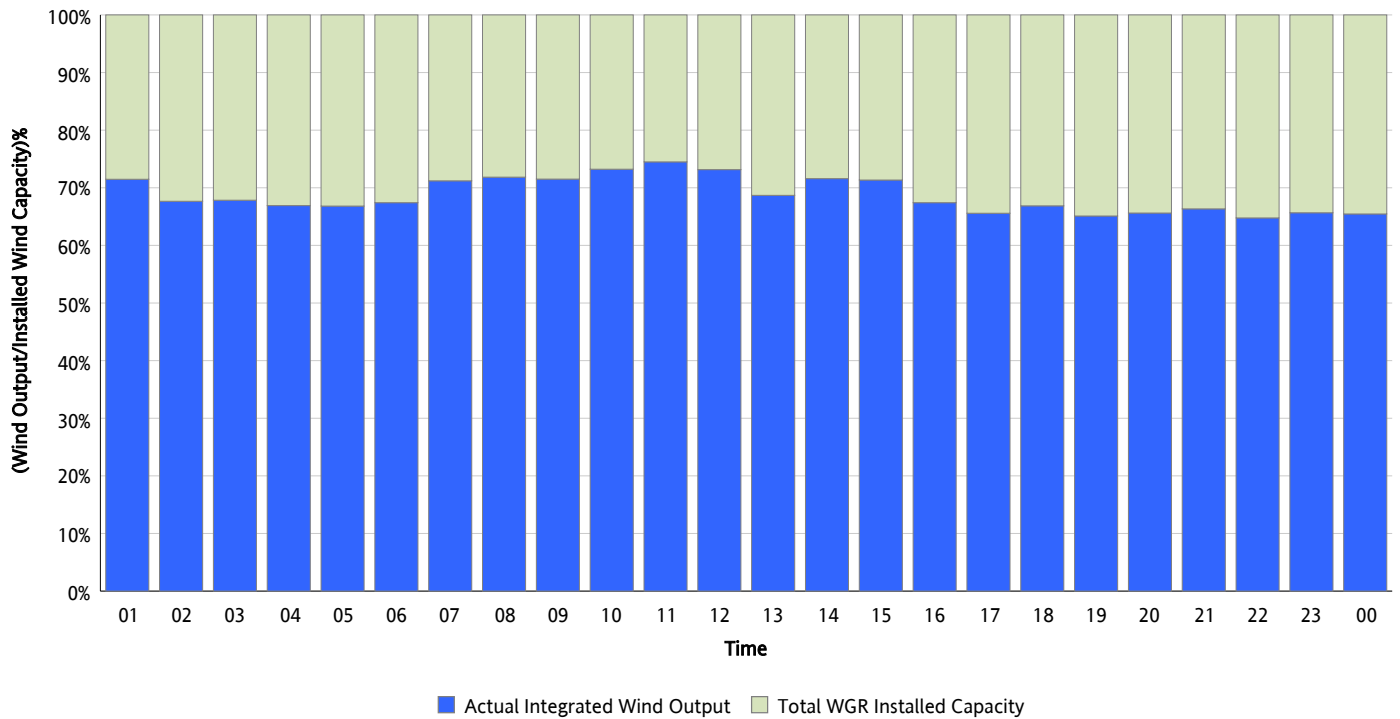
Hourly Average Actual Load vs. Actual Wind Output
06/20/2012



* Wind Record and Wind Max represent instantaneous values and the rest of the values are integrated over the hour

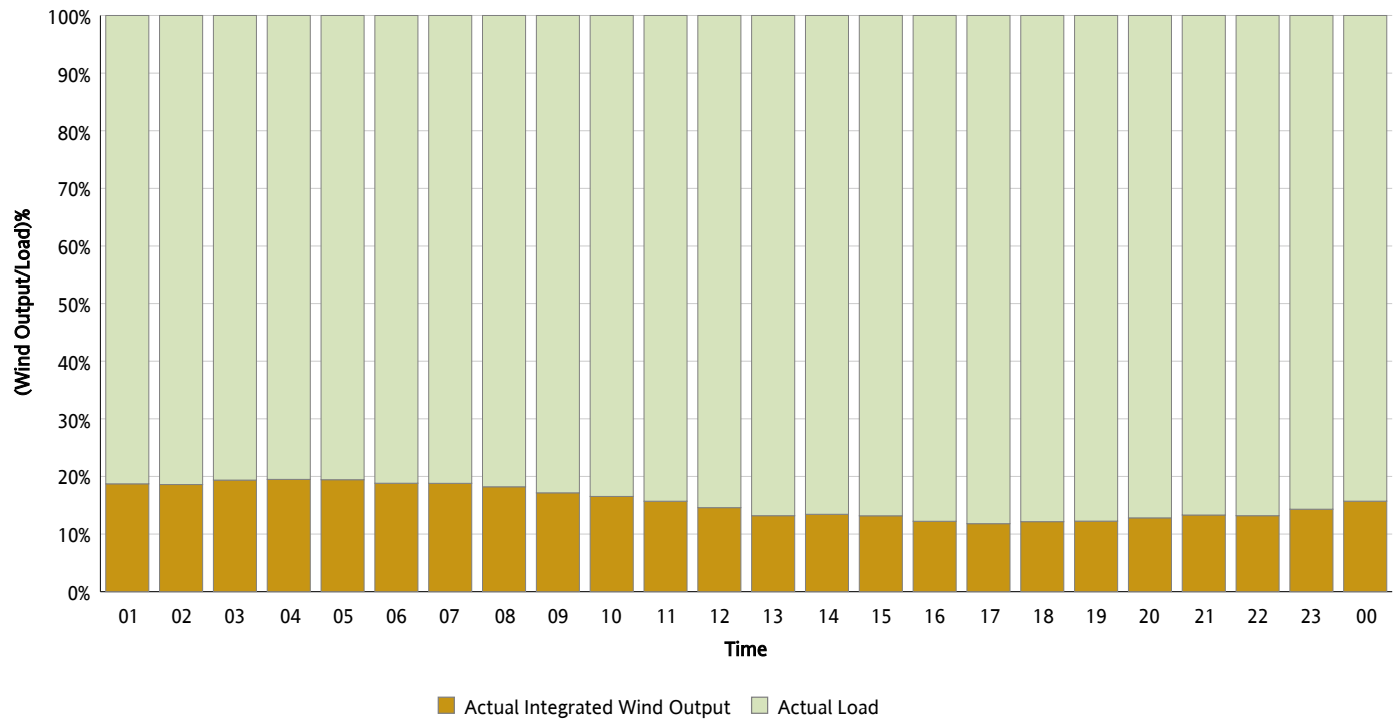
Actual Wind Output as a Percentage of the Total Installed Wind Capacity

06/20/2012



Actual Wind Output as a Percentage of the ERCOT Load

06/20/2012



ERCOT Load vs. Actual Wind Output

06/13/2012 - 06/20/2012

